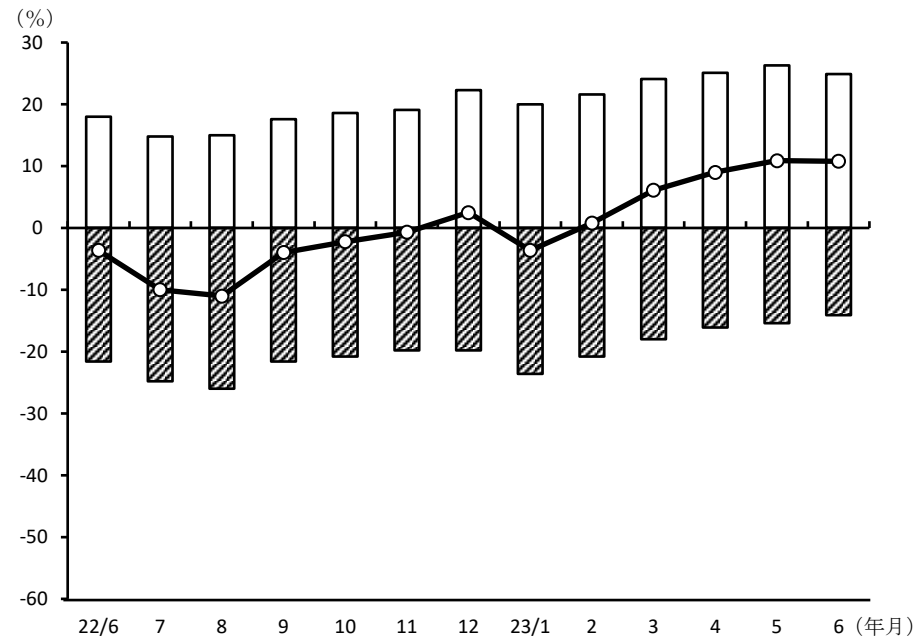


# 小規模企業景気動向調査(2023年6月期)

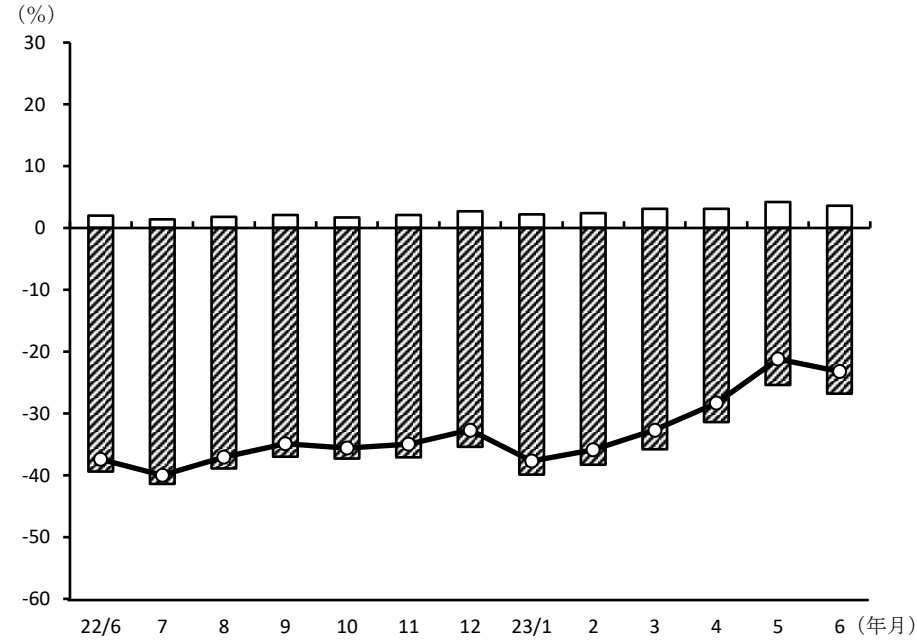
## 産業全体(前年同月比)

### 売上額



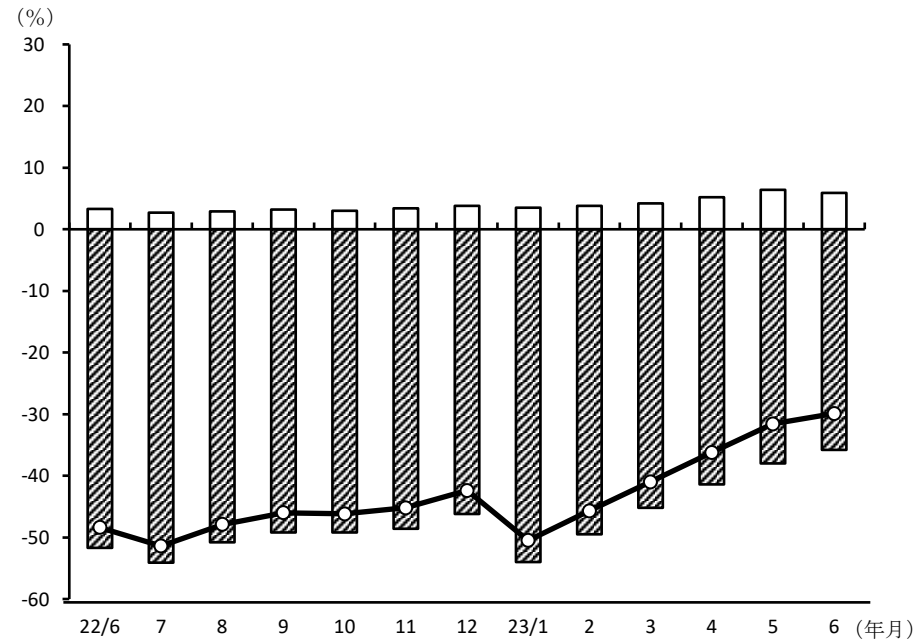
年/月	増加	減少	DI
22/6	18.0	-21.6	-3.6
7	14.8	-24.8	-10.0
8	15.0	-26.0	-11.0
9	17.6	-21.6	-4.0
10	18.6	-20.8	-2.2
11	19.1	-19.8	-0.7
12	22.3	-19.8	2.5
23/1	20.0	-23.6	-3.6
2	21.6	-20.8	0.8
3	24.1	-18.0	6.1
4	25.1	-16.1	9.0
5	26.3	-15.4	10.9
6	24.9	-14.1	10.8

### 資金繰り



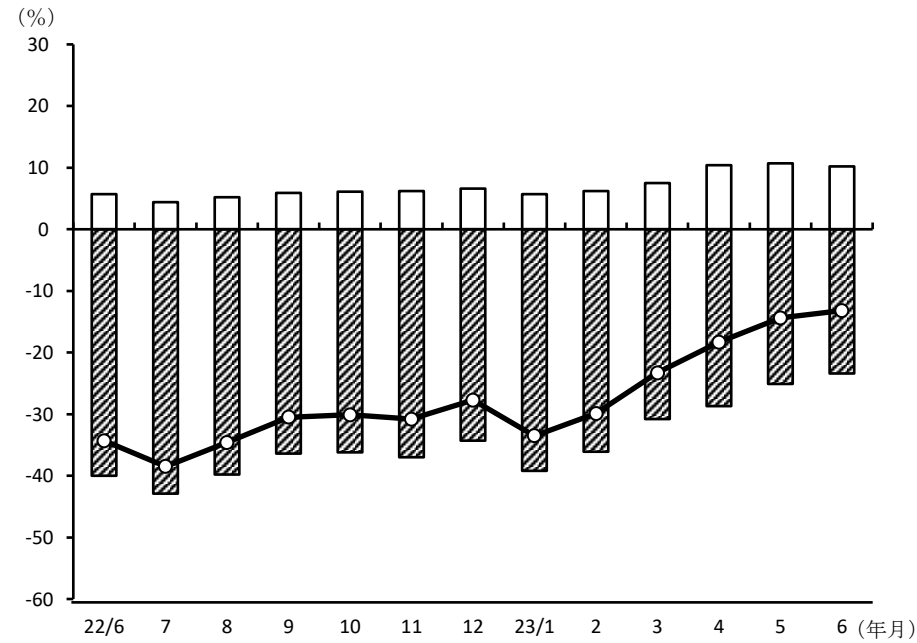
年/月	好転	悪化	DI
22/6	2.0	-39.4	-37.4
7	1.4	-41.4	-40.0
8	1.8	-38.9	-37.1
9	2.1	-37.0	-34.9
10	1.7	-37.3	-35.6
11	2.1	-37.1	-35.0
12	2.7	-35.4	-32.7
23/1	2.2	-39.9	-37.7
2	2.4	-38.3	-35.9
3	3.1	-35.8	-32.7
4	3.1	-31.4	-28.3
5	4.2	-25.4	-21.2
6	3.6	-26.8	-23.2

### 採算



年/月	増加	減少	DI
22/6	3.3	-51.7	-48.4
7	2.7	-54.1	-51.4
8	2.9	-50.8	-47.9
9	3.2	-49.2	-46.0
10	3.0	-49.2	-46.2
11	3.4	-48.6	-45.2
12	3.8	-46.2	-42.4
23/1	3.5	-54.0	-50.5
2	3.8	-49.5	-45.7
3	4.2	-45.2	-41.0
4	5.2	-41.4	-36.2
5	6.4	-38.0	-31.6
6	5.9	-35.8	-29.9

### 業界の業況



年/月	増加	減少	DI
22/6	5.7	-40.0	-34.3
7	4.4	-42.9	-38.5
8	5.2	-39.8	-34.6
9	5.9	-36.4	-30.5
10	6.1	-36.2	-30.1
11	6.2	-37.0	-30.8
12	6.6	-34.3	-27.7
23/1	5.7	-39.2	-33.5
2	6.2	-36.1	-29.9
3	7.5	-30.8	-23.3
4	10.4	-28.7	-18.3
5	10.7	-25.1	-14.4
6	10.2	-23.4	-13.2