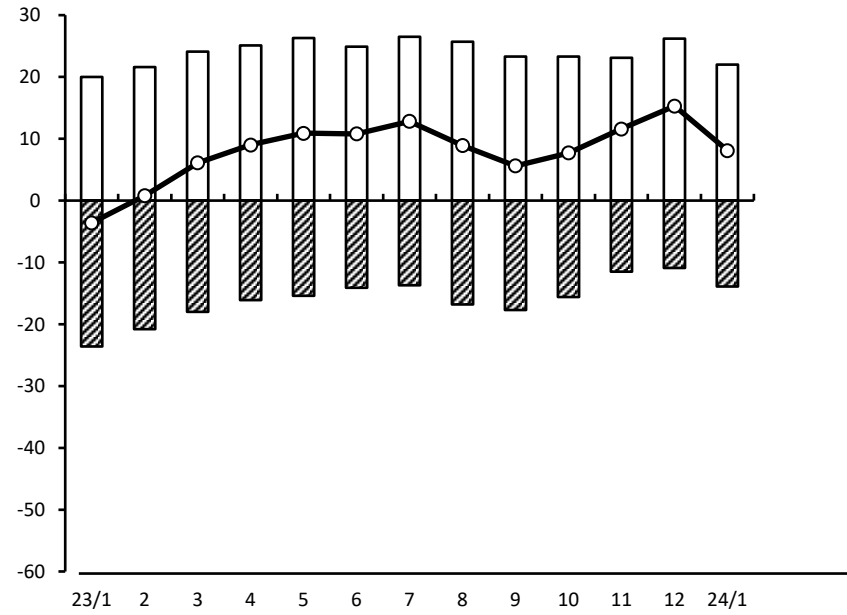


小規模企業景気動向調査(2024年1月期)

産業全体(前年同月比)

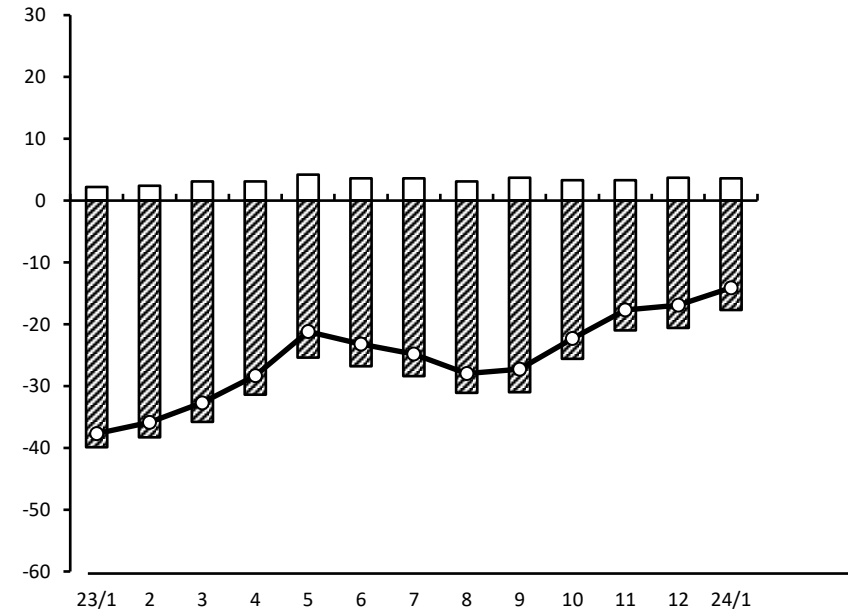
売上額



(年月)

年/月	増加	減少	DI
23/1	20.0	-23.6	-3.6
2	21.6	-20.8	0.8
3	24.1	-18.0	6.1
4	25.1	-16.1	9.0
5	26.3	-15.4	10.9
6	24.9	-14.1	10.8
7	26.5	-13.7	12.8
8	25.7	-16.8	8.9
9	23.3	-17.7	5.6
10	23.3	-15.6	7.7
11	23.1	-11.5	11.6
12	26.2	-10.9	15.3
24/1	22.0	-13.9	8.1

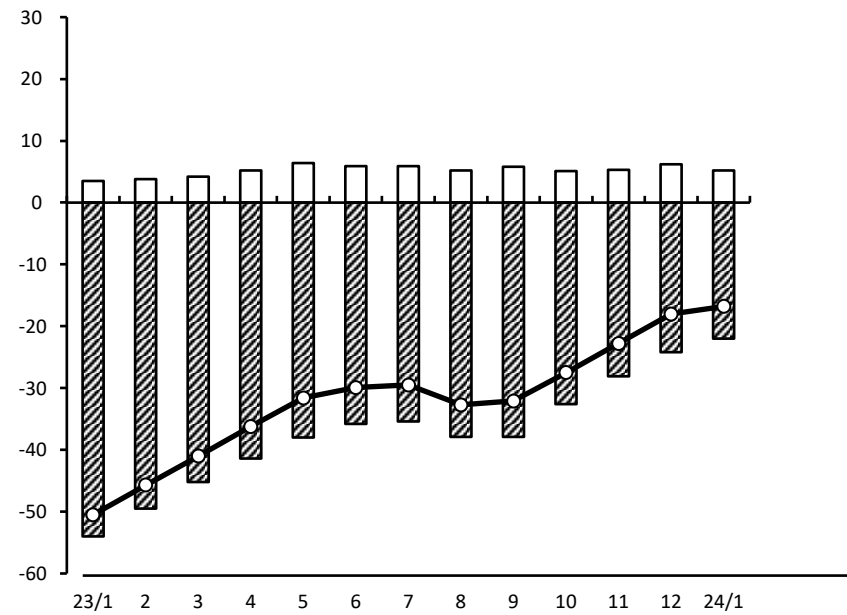
資金繰り



(年月)

年/月	好転	悪化	DI
23/1	2.2	-39.9	-37.7
2	2.4	-38.3	-35.9
3	3.1	-35.8	-32.7
4	3.1	-31.4	-28.3
5	4.2	-25.4	-21.2
6	3.6	-26.8	-23.2
7	3.6	-28.4	-24.8
8	3.1	-31.1	-28.0
9	3.7	-31.0	-27.3
10	3.3	-25.6	-22.3
11	3.3	-21.0	-17.7
12	3.7	-20.6	-16.9
24/1	3.6	-17.7	-14.1

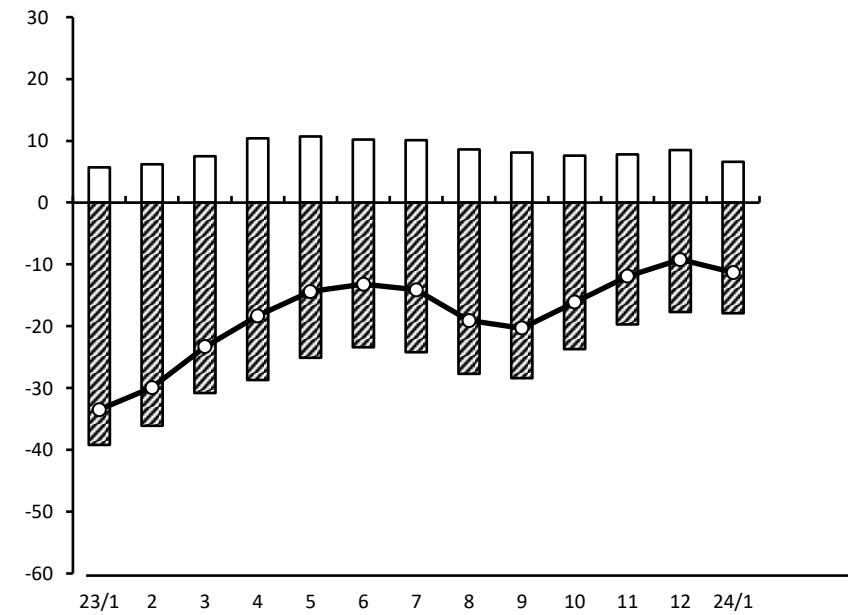
採算



(年月)

年/月	増加	減少	DI
23/1	3.5	-54.0	-50.5
2	3.8	-49.5	-45.7
3	4.2	-45.2	-41.0
4	5.2	-41.4	-36.2
5	6.4	-38.0	-31.6
6	5.9	-35.8	-29.9
7	5.9	-35.4	-29.5
8	5.2	-37.9	-32.7
9	5.8	-37.9	-32.1
10	5.1	-32.6	-27.5
11	5.3	-28.1	-22.8
12	6.2	-24.2	-18.0
24/1	5.2	-22.0	-16.8

業界の業況



(年月)

年/月	増加	減少	DI
23/1	5.7	-39.2	-33.5
2	6.2	-36.1	-29.9
3	7.5	-30.8	-23.3
4	10.4	-28.7	-18.3
5	10.7	-25.1	-14.4
6	10.2	-23.4	-13.2
7	10.1	-24.2	-14.1
8	8.6	-27.7	-19.1
9	8.1	-28.4	-20.3
10	7.6	-23.7	-16.1
11	7.8	-19.7	-11.9
12	8.5	-17.7	-9.2
24/1	6.6	-17.9	-11.3